

skala 1:100

॥ ॐ नमो भगवते वासुदेवाय ॥

Nr	Newborns (children)	Age (yr)	Parents
101	Parents unknown	18.31	Wife, Remarried
119	Remarried	18.21	Wife, Remarried
122	Wife	7.44	Wife, Remarried
123	Parents unknown	22.44	Wife, Remarried
146	Parents unknown	16.58	Wife, Remarried

Fazzerin: 82.98 m

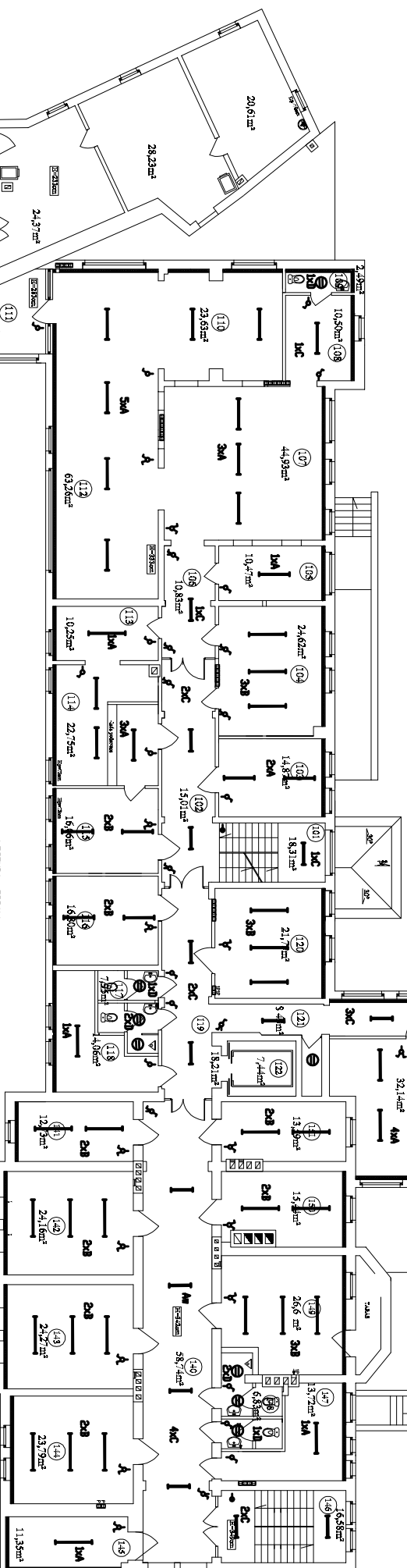


Wykaz pom

No.	Drug per liter	Ph ₁ (m ₁) (m ₂)
102	Chloroquine	1.5/1
103	Albino	1.6
104	Albino	2.4
105	Albino	2.4
106	Albino	1.6
107	Albino	1.6
108	Albino	1.6
109	Albino	1.6
110	Albino	1.6
111	Albino	1.6
112	Albino	1.6
113	Albino	1.6
114	Albino	1.6
115	Albino	1.6
116	Albino	1.6
117	Albino	1.6
118	Albino	1.6
119	Albino	1.6
120	Albino	1.6
121	Albino	1.6
122	Albino	1.6
123	Albino	1.6
124	Albino	1.6
125	Albino	1.6
126	Albino	1.6
127	Albino	1.6
128	Albino	1.6
129	Albino	1.6
130	Albino	1.6
131	Albino	1.6
132	Albino	1.6
133	Albino	1.6
134	Albino	1.6
135	Albino	1.6
136	Albino	1.6
137	Albino	1.6
138	Albino	1.6
139	Albino	1.6
140	Albino	1.6
141	Albino	1.6
142	Albino	1.6
143	Albino	1.6
144	Albino	1.6
145	Albino	1.6
146	Albino	1.6
147	Albino	1.6
148	Albino	1.6
149	Albino	1.6
150	Albino	1.6
151	Albino	1.6
152	Albino	1.6
153	Albino	1.6
154	Albino	1.6
155	Albino	1.6
156	Albino	1.6
157	Albino	1.6
158	Albino	1.6
159	Albino	1.6
160	Albino	1.6
161	Albino	1.6
162	Albino	1.6
163	Albino	1.6
164	Albino	1.6
165	Albino	1.6
166	Albino	1.6
167	Albino	1.6
168	Albino	1.6
169	Albino	1.6
170	Albino	1.6
171	Albino	1.6
172	Albino	1.6
173	Albino	1.6
174	Albino	1.6
175	Albino	1.6
176	Albino	1.6
177	Albino	1.6
178	Albino	1.6
179	Albino	1.6
180	Albino	1.6
181	Albino	1.6
182	Albino	1.6
183	Albino	1.6
184	Albino	1.6
185	Albino	1.6
186	Albino	1.6
187	Albino	1.6
188	Albino	1.6
189	Albino	1.6
190	Albino	1.6
191	Albino	1.6
192	Albino	1.6
193	Albino	1.6
194	Albino	1.6
195	Albino	1.6
196	Albino	1.6
197	Albino	1.6
198	Albino	1.6
199	Albino	1.6
200	Albino	1.6

Razem: 354,47 m²

Powiatowy Ośrodek Dokumentacji Geodezyjnej i Kartograficznej



LEGENDA D'OPRAV

- | | | |
|------|-------------------|--------|
| 4A - | Topnet LIGHT GREY | 2x4 W |
| 4B - | Topnet LIGHT GREY | 2x9 W |
| 4C - | Topnet LIGHT GREY | 2x4 W |
| 4D - | ROD - HS 23 V | |
| 4E - | Karlsruhe AEP | |
| 4F - | VT 360 C | 2x28 V |
| 4G - | VT 360 C | 2x9 V |
| 4H - | VT 360 C | 2x8 V |
| 4J - | VT 360 C | 1x9 V |

Projektowane oprawy zasilić przewodami miedzianymi z izolacją w dany pomieszczeniu puszką instalacyjnej

Wykaz pomieszczeń

No	Neuron number	Pos./neg.	Proportion
120	Kortina	13.30	WSS, anterior
121	Kortina	13.30	WSS, anterior
122	Sala minor PLUD	33.14	WSS, anterior
126	Kortina	22.47	WSS, anterior
127	Kortina	4.72	WSS, anterior
128	Sergiyevsk	9.30	WSS, anterior
129	Zakharov	4.32	WSS, anterior
133	Belitskii	3.18	Gray
130	Birno	42.02	WSS, anterior
131	Birno	13.69	WSS, anterior
132	Birno	19.36	WSS, anterior
133	Birno	17.19	WSS, anterior

Razon: 186,13m

(1) *Optimal control problem*

No.	Verenigingsnaam	Plaats, land	Participatie
1-40	Koninkrijksoctrooi	98,7%	WVd. Smeets
1-41	Stroom	98,7%	WVd. Smeets
1-42	Stroom	25,16%	WVd. Smeets
1-43	Stroom	25,16%	WVd. Smeets
1-44	Stroom	25,16%	WVd. Smeets
1-45	Stroom	25,16%	WVd. Smeets
1-46	Stroom	25,16%	WVd. Smeets
1-47	Stroom	25,16%	WVd. Smeets
1-48	Stroom	25,16%	WVd. Smeets
1-49	Stroom	25,16%	WVd. Smeets
1-50	Stroom	25,16%	WVd. Smeets
1-51	Stroom	25,16%	WVd. Smeets
1-52	Stroom	25,16%	WVd. Smeets
1-53	Stroom	25,16%	WVd. Smeets
1-54	Stroom	25,16%	WVd. Smeets
1-55	Stroom	25,16%	WVd. Smeets
1-56	Stroom	25,16%	WVd. Smeets
1-57	Stroom	25,16%	WVd. Smeets
1-58	Stroom	25,16%	WVd. Smeets
1-59	Stroom	25,16%	WVd. Smeets
1-60	Stroom	25,16%	WVd. Smeets
1-61	Stroom	25,16%	WVd. Smeets
1-62	Stroom	25,16%	WVd. Smeets
1-63	Stroom	25,16%	WVd. Smeets
1-64	Stroom	25,16%	WVd. Smeets
1-65	Stroom	25,16%	WVd. Smeets
1-66	Stroom	25,16%	WVd. Smeets
1-67	Stroom	25,16%	WVd. Smeets
1-68	Stroom	25,16%	WVd. Smeets
1-69	Stroom	25,16%	WVd. Smeets
1-70	Stroom	25,16%	WVd. Smeets
1-71	Stroom	25,16%	WVd. Smeets
1-72	Stroom	25,16%	WVd. Smeets
1-73	Stroom	25,16%	WVd. Smeets
1-74	Stroom	25,16%	WVd. Smeets
1-75	Stroom	25,16%	WVd. Smeets
1-76	Stroom	25,16%	WVd. Smeets
1-77	Stroom	25,16%	WVd. Smeets
1-78	Stroom	25,16%	WVd. Smeets
1-79	Stroom	25,16%	WVd. Smeets
1-80	Stroom	25,16%	WVd. Smeets
1-81	Stroom	25,16%	WVd. Smeets
1-82	Stroom	25,16%	WVd. Smeets
1-83	Stroom	25,16%	WVd. Smeets
1-84	Stroom	25,16%	WVd. Smeets
1-85	Stroom	25,16%	WVd. Smeets
1-86	Stroom	25,16%	WVd. Smeets
1-87	Stroom	25,16%	WVd. Smeets
1-88	Stroom	25,16%	WVd. Smeets
1-89	Stroom	25,16%	WVd. Smeets
1-90	Stroom	25,16%	WVd. Smeets
1-91	Stroom	25,16%	WVd. Smeets
1-92	Stroom	25,16%	WVd. Smeets
1-93	Stroom	25,16%	WVd. Smeets
1-94	Stroom	25,16%	WVd. Smeets
1-95	Stroom	25,16%	WVd. Smeets
1-96	Stroom	25,16%	WVd. Smeets
1-97	Stroom	25,16%	WVd. Smeets
1-98	Stroom	25,16%	WVd. Smeets
1-99	Stroom	25,16%	WVd. Smeets
1-100	Stroom	25,16%	WVd. Smeets

Razem: 231,24 m³

[illegible]